



Cyclin F Polyclonal Antibody

Catalog No	YP-Ab-16730
Isotype	IgG
Reactivity	Human;Rat;Mouse;
Applications	WB;IHC;IF;ELISA
Gene Name	CCNF
Protein Name	Cyclin-F
Immunogen	The antiserum was produced against synthesized peptide derived from human Cyclin F. AA range:737-786
Specificity	Cyclin F Polyclonal Antibody detects endogenous levels of Cyclin F protein.
Formulation	Liquid in PBS containing 50% glycerol, 0.5% BSA and 0.02% sodium azide.
Source	Polyclonal, Rabbit,IgG
Purification	The antibody was affinity-purified from rabbit antiserum by affinity-chromatography using epitope-specific immunogen.
Dilution	WB: 1/500 - 1/2000. IHC: 1/100 - 1/300. ELISA: 1/10000.. IF 1:50-200
Concentration	1 mg/ml
Purity	≥90%
Storage Stability	-20°C/1 year
Synonyms	CCNF; FBX1; FBXO1; Cyclin-F; F-box only protein 1
Observed Band	88kD
Cell Pathway	Nucleus . Cytoplasm, perinuclear region . Cytoplasm, cytoskeleton, microtubule organizing center, centrosome, centriole . Localization to the centrosome is rare in S phase cells and increases in G2 cells. Localizes to both the mother and daughter centrioles. Localization to centrosomes is not dependent on CP110. Localizes to the nucleus in G2 phase. .
Tissue Specificity	Widely expressed, with expression detected in the heart, brain, placenta, lung, liver, skeletal muscle, kidney and pancreas.
Function	developmental stage:G2/M cyclins accumulate steadily during G2 and are abruptly destroyed at mitosis.,function:Likely to be involved in the control of the cell cycle during S phase and G2.,similarity:Belongs to the cyclin family.,similarity:Belongs to the cyclin family. Cyclin AB subfamily.,similarity:Contains 1 F-box domain.,
Background	This gene encodes a member of the cyclin family. Cyclins are important regulators of cell cycle transitions through their ability to bind and activate cyclin-dependent protein kinases. This member also belongs to the F-box protein family which is characterized by an approximately 40 amino acid motif, the F-box. The F-box proteins constitute one of the four subunits of the ubiquitin protein ligase complex called SCFs (SKP1-cullin-F-box), which function in



phosphorylation-dependent ubiquitination. The F-box proteins are divided into 3 classes: Fbws containing WD-40 domains, Fbls containing leucine-rich repeats, and Fbxs containing either different protein-protein interaction modules or no recognizable motifs. The protein encoded by this gene belongs to the Fbxs class and it was one of the first proteins in which the F-box motif was identified. [provided by RefSeq, Jul 2008],

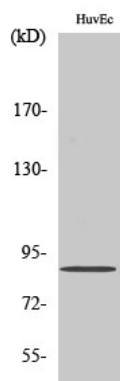
matters needing attention

Avoid repeated freezing and thawing!

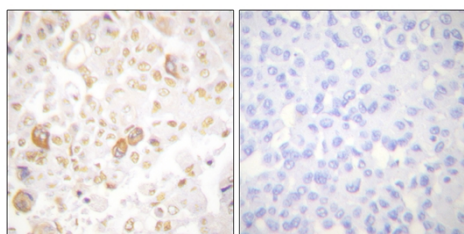
Usage suggestions

This product can be used in immunological reaction related experiments. For more information, please consult technical personnel.

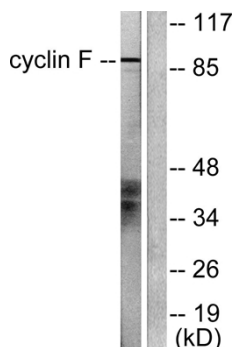
Products Images



Western Blot analysis of various cells using Cyclin F Polyclonal Antibody diluted at 1:500 cells nucleus extracted by Minute TM Cytoplasmic and Nuclear Fractionation kit (SC-003, Inventbiotech, MN, USA).



Immunohistochemistry analysis of paraffin-embedded human breast carcinoma tissue, using Cyclin F Antibody. The picture on the right is blocked with the synthesized peptide.



Western blot analysis of lysates from HeLa cells, using Cyclin F Antibody. The lane on the right is blocked with the synthesized peptide.